

## Gas Turbine Air Inlet System Field Services

**Pneumafil Field Services** provides a complete array of services and manufactured components to help power producers get the most out of their turbine's inlet air systems.

### Inlet Air System Retrofit and Refurbishment

Pneumafil has built inlet systems for every type of turbine, climate, and inlet configuration. Which means we can engineer the proper system enhancement or rebuild for your needs, including:

- Anti-icing and up-front heating systems
- Power augmentation: evaporative coolers, chillers, and fogging systems
- Silencing and inlet air ducting
- Filtration enhancement, including additional stages of filtration
- Major repair or replacement of filter house or other inlet air components

### Scheduled Maintenance

Our experts can inspect your inlet air system to ensure that it is operating within specifications and make specific recommendations for improvement, if called for. Services include:

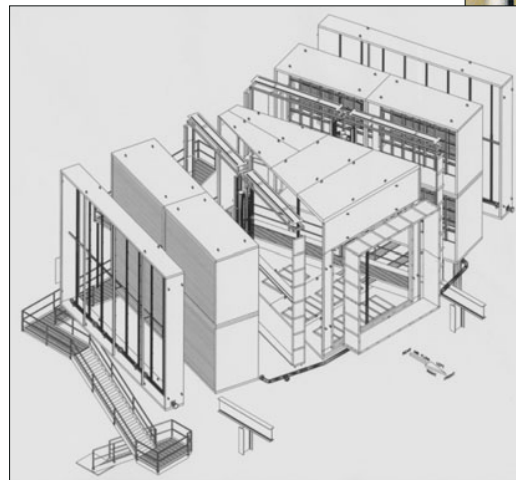
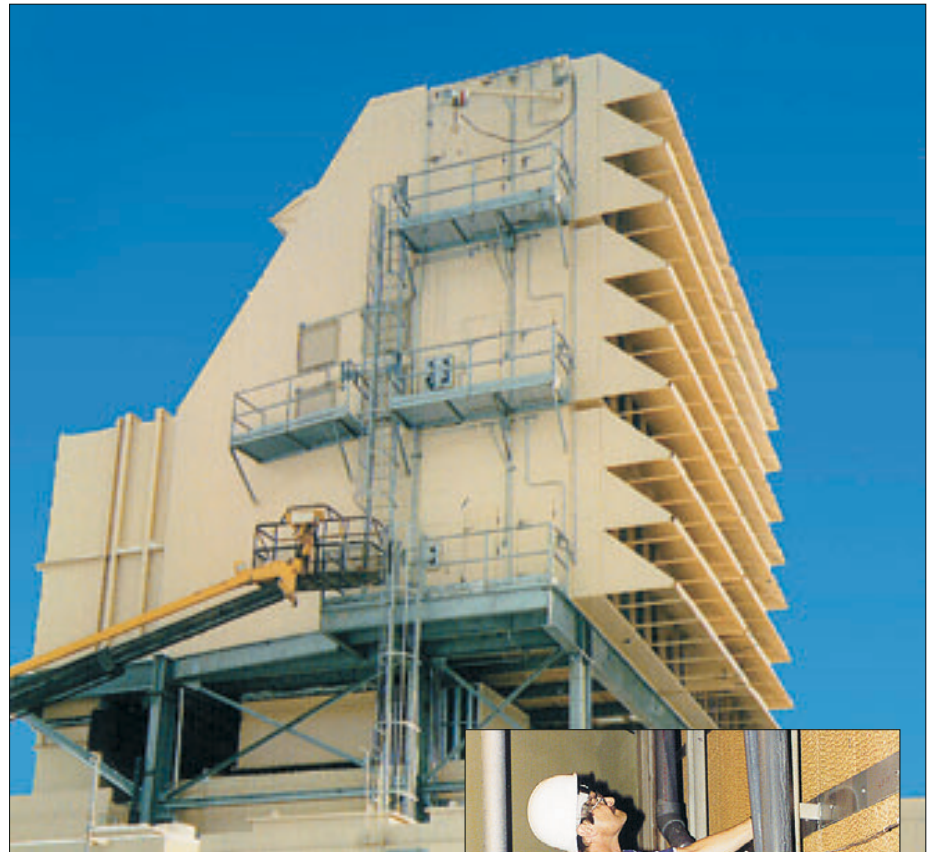
- System audit reviews
- Filter element replacement
- Evaporative cooler media replacement and reservoir water quality assessment
- Self-cleaning pulse systems: check/replace air compressors, valves, sequential timers.

### The Pneumafil Advantage

With **PFS** you have the peace of mind knowing that one of the premier manufacturers of gas turbine air inlet systems is handling your project. We do not contract out this service—only trained, knowledgeable Pneumafil employees will supervise the work.

Pneumafil can provide complete turnkey project management and execution for retrofit of inlet air systems including:

- Knockdown
- Rebuilding
- Installation
- Commissioning



Our trained technicians insure that the job is done right.

We can engineer to any inlet air system configuration, turbine make, or operating condition—no one has a greater variety of experience with inlet design than Pneumafil.

**PFS** personnel are backed an engineering team that is highly respected for its technical competence. You can be assured that the work performed will be exactly appropriate for your turbine and environmental conditions.

Call 800-525-1560 for complete information.